

Household LP GAS safety guide

Please keep this guidebook in your kitchen, living room, or wherever your family can easily find it.

For safe and secure use



Liquefied Petroleum Gas Safety Commission
Ministry of Economy, Trade and Industry

[Safety check points] to check on a daily basis.

- Attaching double chains is recommended.
- The installation site should be at least 2 meters away from any ignition source.

Check ventilation

- Make a habit of ensuring ventilation when using gas appliances.

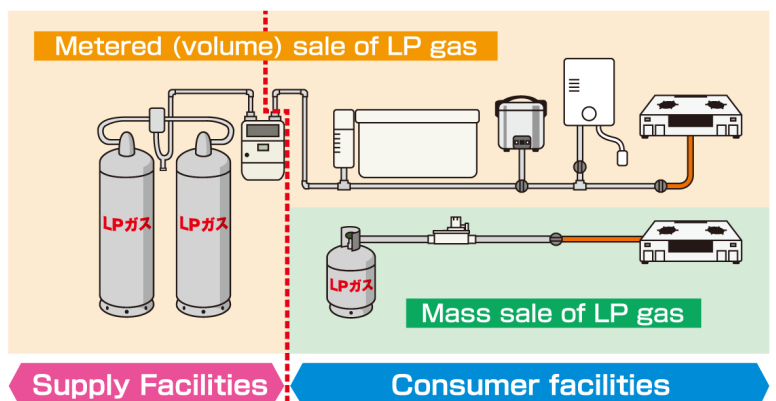
Check the ignition

Repeated ignition/re-ignition

Going out

- Accidents will occur if you forget to confirm proper ignition. Be sure to check visually!
 - Accidents occur when gas accumulates in an appliance after repeated failures at ignition. Always be careful when attempting to ignite a gas appliance after failing the first few times.
- ※Is the battery dead?
- ※If it is difficult to light the appliance, contact an LP gas shop immediately to have the appliance checked.

- Facilities between the LP gas cylinders and the gas meter outlet are called “**supply facilities**”, and the LP gas shop is responsible for inspecting, maintaining and controlling these facilities.
- Facilities between the gas meter outlet and your gas appliances are called “**consumer facilities**”, and you are legally responsible for managing and controlling these facilities. Daily inspections, maintenance and control must be performed by the LP gas consumers themselves.



What is carbon monoxide (CO) poisoning!

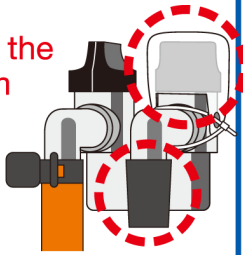
If you use a gas appliance in an environment without sufficient air (oxygen), the appliance will generate carbon monoxide due to incomplete combustion. Carbon monoxide is extremely toxic. Inhaling even small amounts can cause headaches or nausea, and there is even the risk of death because a victim may become immobile before realizing that there is a problem. We recommend installing a CO alarm.

✓ Unused gas valve

- Is the knob [Closed]?

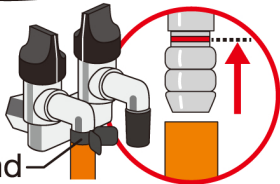
※Put on gas valve covers to prevent the wrong valves from being opened.

- Is the gas valve covered with a rubber cap?



✓ Rubber hose

- Are there any burn marks or cracks?
- Does the hose reach the red line on the gas valve?
- Is the hose firmly fastened with a hose band?



hose band

To users of gas heaters and gas fan heaters

- Be sure to open a window to ventilate for a few minutes once or twice every hour.

○Please consult with your local LP GAS shop if you use a gas appliance with no safety device, or a water heater or bath heater with an exhaust pipe indoors.

✓ CO alarm

✓ Gas leak alarm



- Be sure to plug the alarm back in the plug outlet after using a vacuum cleaner etc.
- Is the plug detached?



Example of a gas alarm



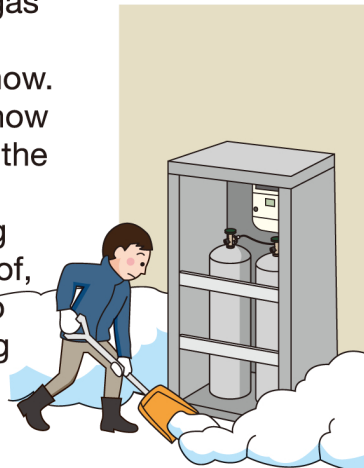
Example of a CO alarm

By installing a gas alarm or CO alarm, you'll have peace of mind because you'll be alerted by a buzzer or voice message when there is gas trouble.

※CO alarms should be replaced every 5 years.

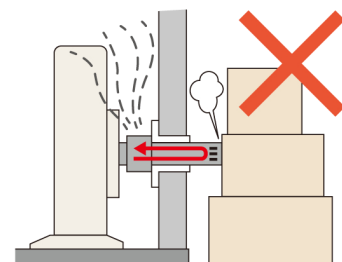
✓ Recommended steps to prevent snow damage

- A regulator or gas meter can be damaged by snow. Please use a snow fence or check the cylinder hut.
- When removing snow from a roof, pay attention to avoid damaging the LP GAS facilities.



✓ Combustion appliances which intake and exhaust directly outdoors

- Is the exhaust pipe detached?
- Is the exhaust port blocked?
- Is the end of the exhaust pipe set outdoors?



What do you do when you smell gas?

Never use an ignition source

- Never touch the switches of lights, ventilation fans, or other electrical appliances. These may spark and ignite fires.
- Electrical switches tend to spark when turned off. Never touch them if you smell gas.



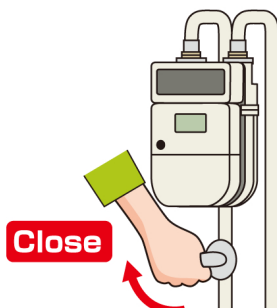
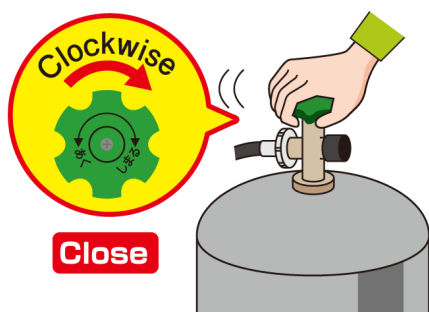
Open windows and doors wide to flush out the gas.

- Check for gas accumulation at low places. Remember that LP GAS is heavier than air.



Close all gas and appliances valves.

- Be sure to close the gas meter valve or gas cylinder valve.



○ If you don't know where the gas meter valve is, check with your local LP GAS shop now, in advance.

Report the gas leak immediately.



Details to give when calling the "Emergency contact address"

- Your name
- Your address
- A landmark to find your house
- The condition of the site

Follow the instructions from the "Emergency contact" person.



○ Do not use any gas until safety is confirmed.

- Check the emergency contact address for your local LP GAS shop (for future reference).
- Contact in an emergency is available 24 hours a day.

In the case of an earthquake, fire or disaster

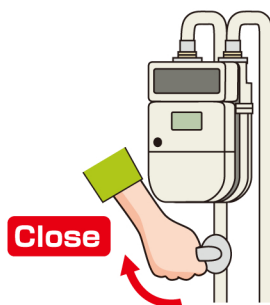
When evacuating or if you smell gas, stop using the gas, and close all valves on gas appliances, as well as the main gas valve, gas meter valve and gas cylinder valve.

In the event of a gas leak or before evacuating

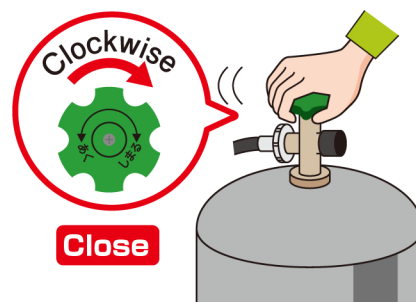
■ Gas valve



■ Gas meter valve



■ Gas cylinder valve



※Inspections will be conducted in sequence to check for gas leaks and inspect gas cylinders in areas where houses and buildings have been damaged. Please cooperate with these inspections.

Always contact your local LP GAS shop when....

- Request an inspection from the appliance manufacturer or LP GAS shop immediately.
- Appliance inspections are free of charge, but if repairs or improvements are necessary, a fee may be required.



Flame	Flame is unstable	Flame is yellow	There is a part with no flame.
	Flame goes out during use	Fire does not spread smoothly	Flame flares up or explodes on ignition
	Difficult to ignite	Doesn't ignite	
Operation	Abnormal noise as the flame burns		A smell of gas
	A smell of exhaust gas during operation		

LP GAS Maintenance Services

As required by law, LP gas inspectors are dispatched on regular maintenance rounds to increase public awareness and to inspect and study safety conditions at consumer sites to promote safe usage of LP gas. Such activities are sometimes delegated by LP gas shops to certified maintenance organizations. Please cooperate with the inspectors from these maintenance organizations when they visit.

■ Public awareness

LP GAS shop regularly sends out guidelines on usage and tips on preventing accidents.

Once a year
(or every
two years)

■ Communication and handling in an emergency

Prompt handling of gas leaks, etc.

LP GAS shop
responds to
all emergencies
within 30 minutes
free of charge.

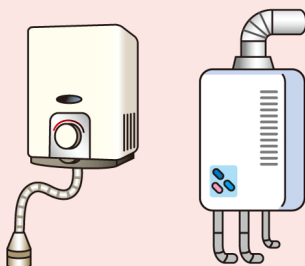
Emergency
contact is
accessible
24 hours a day
and on
holidays.

◎ [Maintenance service] is provided free of charge. Fees will be charged for the repair or improvement of a [consumption facility].

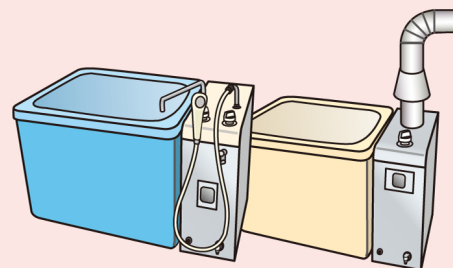
Do you know about the “LP Gas Safety System”? (Long-term usage product safety inspection system)

Since April 2009 an inspection system is provided for manufactured and imported “Specified Maintenance Products”.

When you purchase a specified maintenance product, be sure to register as an owner.



Indoor type
instantaneous gas water heaters



Indoor type
bathtub gas water heaters

Products manufactured before April 2009 are not subject to statutory inspections, but a similar inspection can be performed for a fee if requested by a customer. Contact the appliance manufacturer.

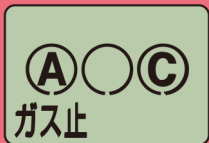
When your gas suddenly stops

First, let's check on safety and the reason the gas shut off.

The gas supply is automatically shut off at times like these:



When an earthquake of around intensity 5 occurs while the gas is in use.



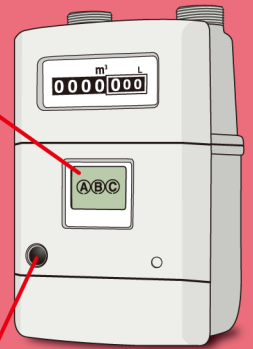
When gas continues to be used for a long time, such as when an appliance hasn't been turned off.



When there is quite a lot of gas flowing, such when a rubber hose has come off.

Display

Reset button



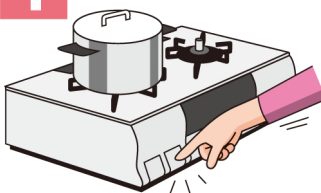
Resetting the gas meter



Caution

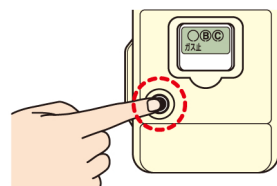
If there is a gas leak or you smell gas, do not try to reset the meter to use gas again. Contact your LP gas shop or the emergency contact address.

1



- Close all appliance valves.
- Check that all unused gas valves are closed.

2



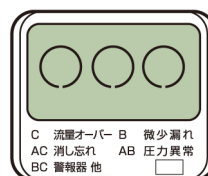
- Press the reset button on the left side.
- The “**ガス止** (Gas Supply Stopped)” message goes out.

3



- Letters on the LCD and the lamp begin flashing.
 - Wait for **one minute**.
- ※The reset button may have a lamp on some meters.

4







- The letters on the LCD and the lamp go out.
- Reset is complete.
- Gas can be used again.

※If gas was not in use, the gas supply is not shut off.

※If your gas is not usable after you complete the reset steps, do not repeat the reset procedure. Contact your LP gas shop for an inspection.

Contact address for inspection or repair of combustion appliances, ventilation fans, etc. (Fill-in form)

※Check the contact address for inspection or repair in the instruction manual or on the website of the appliance manufacturer.

Product or appliance name	Manufacturer name	Date of Installation (year/month)	Contact for inspection or repair
①			
②			
③			
④			

Contact address for LP GAS emergencies!

Contact address

Tel.

Contact in an emergency is available 24 hours a day.

LP GAS shop

LPガス安全委員会

検索



Also accessible using a smartphone.

Foreign language versions (English, Portuguese, Chinese, Korean, Spanish)
are available on the LP gas websites.

For more details, visit the homepage of the Liquefied Petroleum Gas Safety Commission.

<http://www.lpg.or.jp/>